

**THE ANNIVERSARY SERIES**

The Anniversary

**2848**

**27' x 48'**

DIMENSIONS

**1,280** sf

LIVING SPACE

**3**

BEDROOMS

**2**

BATHROOMS

**OVERVIEW**

250th Anniversary Package - base price includes home loaded with upgrades including Palisade Tiled Shower, SS Samsung Appliance Package, Matte black faucets, 42" Tall hardwood cabinets, 5 1/2" base board molding all at one special price.

Heritage Home Center

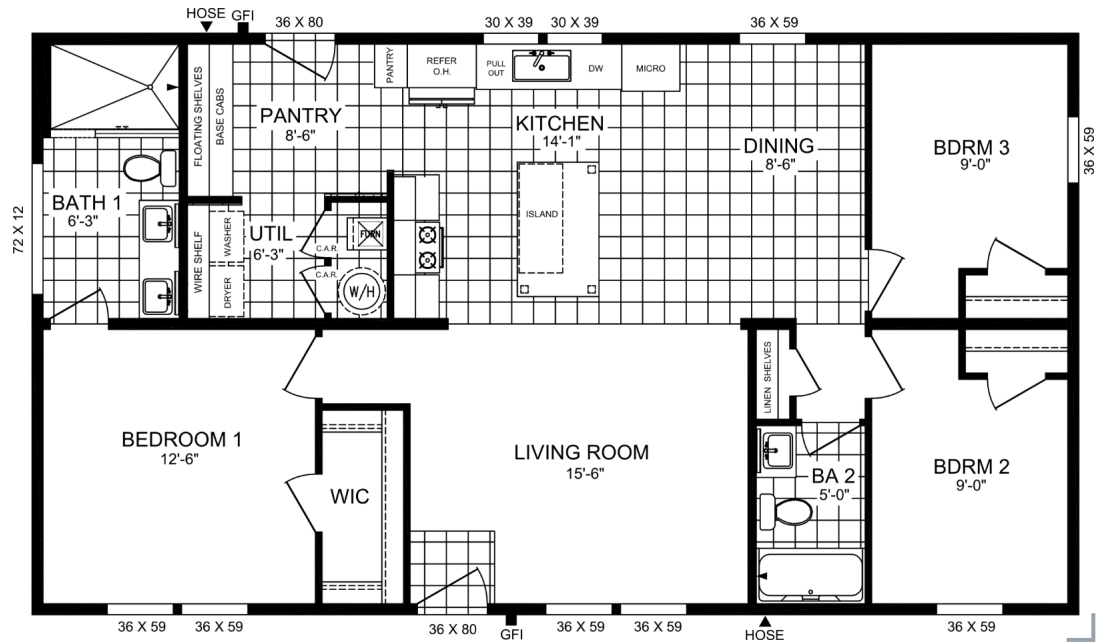
**(425) 353-5464**

or **Request Firm Quote**

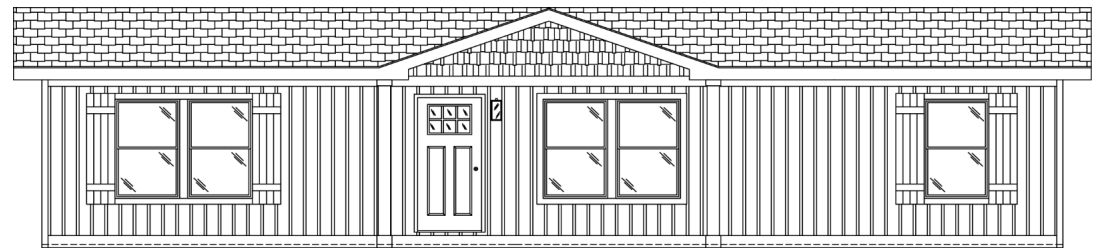
EMAIL US

**01 FLOOR PLAN**

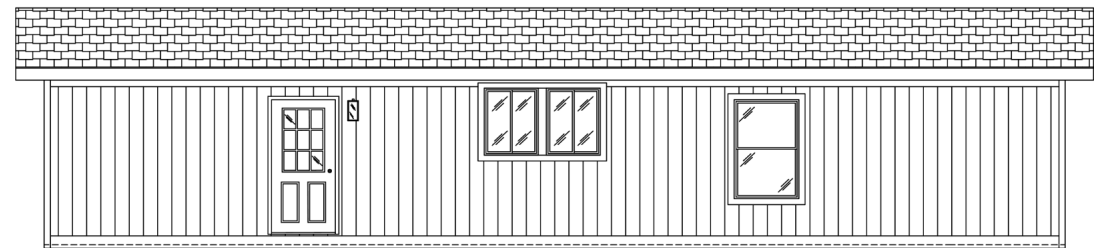
1,280 SQ FT · 27' x 48'



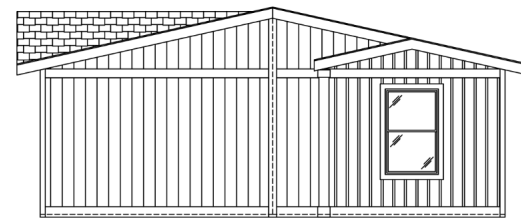
**02 FRONT ELEVATION**



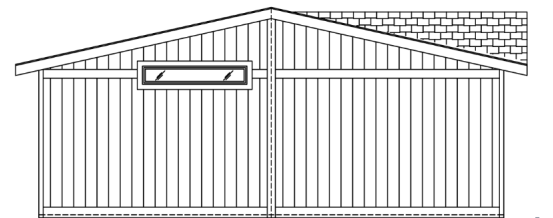
FRONT SIDEWALL



REAR SIDEWALL



FRONT ENDWALL



REAR ENDWALL

# The Anniversary 2848

3 Bedrooms | 2 Bathrooms | 1,280 sq ft

## STANDARD FEATURES

- ✓ Energy Star Rated Home
- ✓ Matte Black Hardware Package including faucets, interior door and cabinet hardware
- ✓ Board and Batton Exterior with Accents
- ✓ LP Smartside Panel Siding with 5/50 Year Limited Warranty
- ✓ Weather Resistant House Wrap Under Siding
- ✓ 2" x 6" Exterior Walls
- ✓ 5 1/2" Smooth White Baseboard Molding Throughout Home
- ✓ 48" x 72" Palisade Tiled Shower in Primary Bathroom
- ✓ Backlit Mirrors in Bathrooms
- ✓ Samsung Stainless Steel Appliances
- ✓ 36" Stainless Steel European Range Hood
- ✓ Single Cell Stainless Steel Kitchen Sink w/ Accessories
- ✓ Rheem 50 Gallon Water Heater
- ✓ Craftsman Style Front Door

**Heritage Home Center**

Washington's Price and Volume Leader

**(425) 353-5464**

CALL TO TOUR

[Request Firm Quote](#)

EMAIL US

Features/specs subject to change.

# The Anniversary 2848

3 Bedrooms | 2 Bathrooms | 1,280 sq ft

## Photo Gallery



Photo 1



Photo 2



Photo 3



Photo 4

**Heritage Home Center**  
Washington's Price and Volume Leader

**(425) 353-5464**

— CALL TO TOUR

**[Request Firm Quote](#)**

— EMAIL US

Features/specs subject to change.

# The Anniversary 2848

3 Bedrooms | 2 Bathrooms | 1,280 sq ft



Photo 5

---

**Heritage Home Center**  
Washington's Price and Volume Leader

**(425) 353-5464**

— CALL TO TOUR

**[Request Firm Quote](#)**

— EMAIL US

Features/specs subject to change.